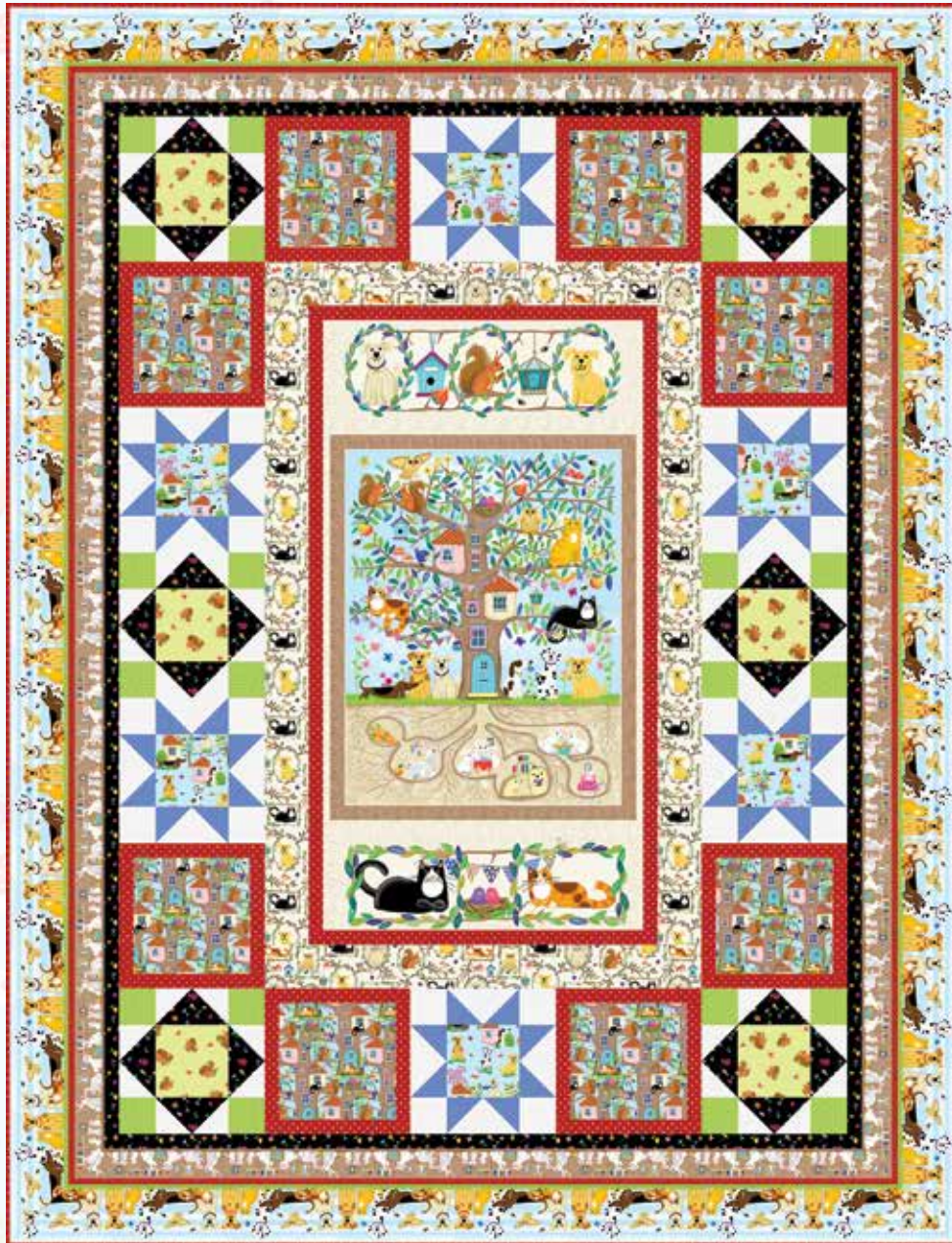


# Tree House

• A Free Project Sheet •  
• NOT FOR RESALE •

By Kate Mawdsley

Quilt Design by Heidi Pridemore



Quilt 1

Skill Level: Advanced Beginner



Henry Glass & Co., Inc.



facebook

Finished Quilt Size: 65" x 85"  
49 West 37th Street, New York, NY 10018  
tel: 212-686-5194 fax: 212-532-3525  
Toll Free: 800-294-9495  
[www.henryglassfabrics.net](http://www.henryglassfabrics.net)

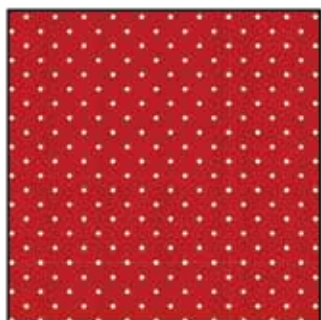
Please check our website for pattern updates before starting this project.



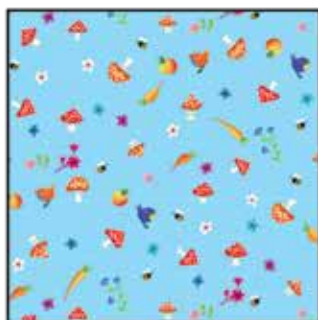
# TREE HOUSE Quilt 1

Finished Quilt Size: 65" x 85"

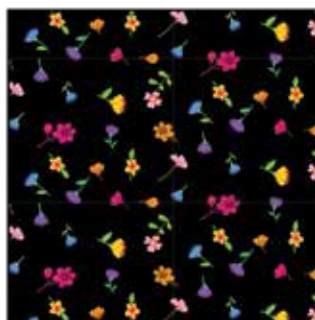
## Fabrics in the Collection



Dots  
Red – 521-88



Mushroom  
Blue – 522-11



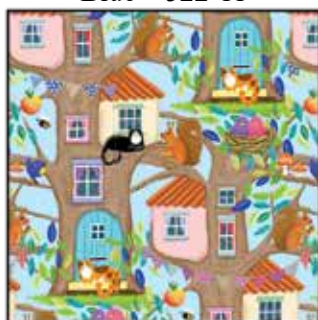
Tiny Floral  
Black – 523-99



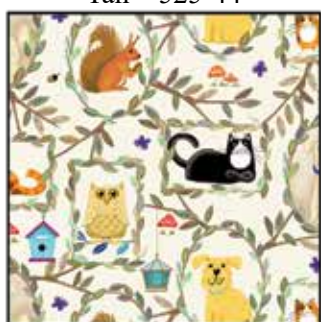
Tossed Squirrel  
Green – 524-66



Tossed Circle  
Tan – 525-44



Tree House  
Blue – 526-11



Patchwork  
Tan – 527-44



Scenic  
Blue – 528-11



24 Inch Panel  
Tan – 530P-44



Border Stripe  
Multi – 529-61

## Select Fabrics from Modern Melody Basics



Pigment White  
1063-01W



Lime  
1063-64



True Blue  
1063-71

# TREE HOUSE

## Quilt 1

## Page 3

### Materials

1 panel	24 Inch Panel - Tan (A)	530P-44
1 ¼ yards	Dots - Red (B)	521-88*
1 ½ yards	Patchwork - Tan (C)	527-44
⅔ yard	Tree House - Blue (D)	526-11
¼ yard	Tossed Squirrel - Green (E)	524-66
¾ yard	Tiny Floral - Black (F)	523-99
¼ yard	Modern Melody Basics - Lime (G)	1063-64
1 yard	Modern Melody Basics - Pigment White (H)	1063-01W
¼ yard	Scenic - Blue (I)	528-11
½ yard	Modern Melody Basics - True Blue (J)	1063-71
2 ⅝ yards	Border Stripe - Multi (K)	529-61
5 ¼ yards	Mushroom - Blue (Backing)	522-11

\*Includes binding

### Cutting Instructions

Please note: All strips are cut across the width of fabric (WOF) from selvage to selvage edge unless otherwise noted.

#### From the 24 Inch Panel - Tan (A):

- Fuss cut (1) 22 ½" x 42 ½" rectangle, centered on the panel.

#### From the Dots - Red (B), cut:

- (2) 2" x 42 ½" WOF strips, piece as needed.
- (2) 2" x 25 ½" WOF strips.
- (4) 1 ½" x WOF strips. Sub-cut (16) 1 ½" x 8 ½" strips.
- (4) 1 ½" x WOF strips. Sub-cut (16) 1 ½" x 10 ½" strips.
- (8) 2 ½" x WOF strips for the binding.

#### From the Patchwork - Tan (C), cut:

- (2) 44 ½" x 3 ½" Length of Fabric (LOF) strips.
- From the remaining fabric, cut (2) 3 ½" x 30 ½" WOF strips.

#### From the Tree House - Blue (D), cut:

- (2) 8 ½" x WOF strips. Sub-cut (8) 8 ½" squares.

#### From the Tossed Squirrel - Green (E), cut:

- (1) 5 ½" x WOF strip. Sub-cut (6) 5 ½" squares.

#### From the Tiny Floral - Black (F), cut:

- (4) 3" x WOF strips. Sub-cut (24) 3" x 5 ½" strips.
- (4) 1 ½" x WOF strips. Sew the strips together end to end with diagonal seams and cut (2) 1 ½" x 70 ½" strips.
- (3) 1 ½" x WOF strips. Sew the strips together end to end with diagonal seams and cut (2) 1 ½" x 52 ½" strips.

#### From the Modern Melody Basics - Lime (G), cut:

- (2) 3" x WOF strips. Sub-cut (24) 3" squares.

#### From the Modern Melody Basics - Pigment White (H), cut:

- (4) 3" x WOF strips. Sub-cut (24) 3" x 5 ½" strips.
- (6) 3" x WOF strips. Sub-cut (72) 3" squares.

#### From the Scenic - Blue (I), cut:

- (1) 5 ½" x WOF strip. Sub-cut (6) 5 ½" squares.

#### From the Modern Melody Basics - True Blue (J), cut:

- (4) 3" x WOF strips. Sub-cut (48) 3" squares.

#### From the Border Stripe - Multi (K), cut:

- (2) 7" x 89" LOF strips.
- (2) 7" x 69" LOF strips.

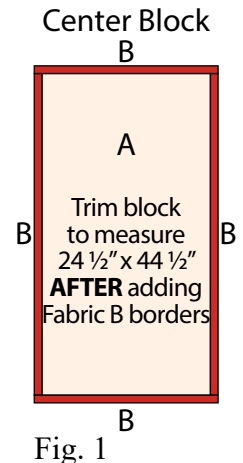
#### From the Mushroom - Blue (Backing), cut:

- (2) 93" x WOF strips for the backing. Sew the strips together and trim to make the 73" x 93" back.

### Block Assembly

*Note: The arrows in figures represent the fabric print direction. Pay attention to the fabric and unit orientations when assembling the various components. Use a ¼" seam allowance with right sides together (RST) unless otherwise noted.*

1. Sew (1) 2" x 42 ½" Fabric B strip to each side of the 22 ½" x 42 ½" Fabric A rectangle. Sew (1) 2" x 25 ½" Fabric B strip to the top and to the bottom of the Fabric A rectangle to make the Center Block (Fig. 1). **Trim the block to measure 24 ½" x 44 ½".**



2. Sew (1) 1 ½" x 8 ½" Fabric B strip to each side of (1) 8 ½" Fabric D square. Sew (1) 1 ½" x 10 ½" Fabric B strip to the top and to the bottom of the Fabric D square to make (1) 10 ½" Block One square (Fig. 2). Repeat to make (8) Block One squares total.

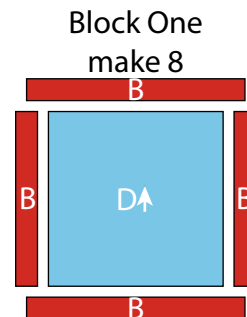


Fig. 2

# TREE HOUSE

## Quilt 1

## Page 4

3. Place (1) 3" Fabric J square on the left side of (1) 3" x 5 1/2" Fabric H strip, right sides together (Fig. 3). Sew across the diagonal of the square from the upper right corner to the lower left corner (Fig. 3). Flip open the triangle formed and press. Trim away the excess fabric from behind the triangle, leaving a 1/4" seam allowance (Fig. 4).



Fig. 3



Fig. 4

4. Place another 3" Fabric J square on the right side of the 3" x 5 1/2" Fabric H strip, right sides together (Fig. 5). Sew across the diagonal of the square from the upper left corner to the lower right corner (Fig. 5). Flip open the triangle formed and press. Trim away the excess fabric from behind the triangle, leaving a 1/4" seam allowance to make (1) Unit 1 strip (Fig. 6).



Fig. 5

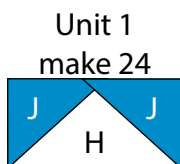


Fig. 6

5. Repeat Steps 3-4 to make (24) Unit 1 strips total.

6. Repeat Steps 3-4 and refer to Figure 7 for fabric identification, placement and seam direction to make (24) Unit 2 strips.

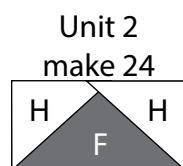


Fig. 7

7. Sew (1) 3" Fabric H square to each end of (1) Unit 1 strip to make the top row. Repeat to make the bottom row. Sew (1) Unit 1 strip to each side of (1) 5 1/2" Fabric I square to make the middle row. Sew together the (3) rows lengthwise to make (1) 10 1/2" Block Two square (Fig. 8). Repeat to make (6) Block Two squares total.

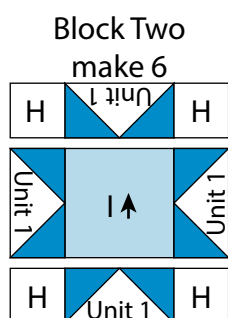


Fig. 8

8. Sew (1) 3" Fabric G square to each end of (1) Unit 2 strip to make the top row. Repeat to make the bottom row. Sew (1) Unit 2 strip to each side of (1) 5 1/2" Fabric E square to make the middle row. Sew together the (3) rows lengthwise to make (1) 10 1/2" Block Three square (Fig. 9). Repeat to make (6) Block Three squares total.

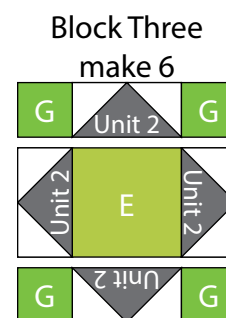


Fig. 9

9. Sew together (1) Block One square, (1) Block Two square, (1) Block Three square, (1) Block Two square and (1) Block One square, in that order from top to bottom, to make (1) Side Border (Fig. 10). Repeat to make a second Side Border.

Side Border



Fig. 10

10. Sew together (1) Block Three square, (1) Block One square, (1) Block Two square, (1) Block One square and (1) Block Three square, in that order from left to right, to make the Top Border (Fig. 11). Repeat to make the Bottom Border.

Top/Bottom Border

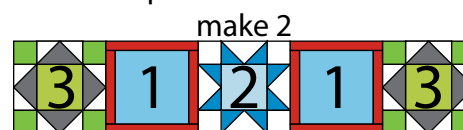


Fig. 11

### Quilt Top Assembly

(Follow the Quilt Layout while assembling the quilt top.)

11. Sew (1) 3 1/2" x 44 1/2" Fabric C strip to each side of the Center Block. Sew (1) 3 1/2" x 30 1/2" Fabric C strip to the top and to the bottom of the Center Block.

12. Sew (1) Side Border to each side of the Center Block.

13. Sew the Top Border and Bottom Border to the top and to the bottom of the Center Block.

# TREE HOUSE

## Quilt 1

## Page 5

14. Sew (1) 1 ½" x 70 ½" Fabric F strip to each side of the Center Block. Sew (1) 1 ½" x 52 ½" Fabric F strip to the top and to the bottom of the Center Block.

15. Center (1) 7" x 89" Fabric K strip on (1) side of the Center Block and pin in place. Start sewing the strip a ¼" from the top edge of the block and stop a ¼" from the bottom edge. **DO NOT TRIM THE EXCESS.** Repeat with the opposite side.

16. Repeat Step 15 to sew (1) 7" x 69" Fabric K strip to the top and to the bottom of the Center Block, making sure to stop and start ¼" away from each end of the block. To miter each corner, fold the Center Block on a diagonal, wrong side together. This should line up the strips from adjacent sides (Fig. 12).

17. Starting at the sewn seam (represented by the arrow in Figure 12), draw a 45-degree line to the edge of the fabric. Sew on the drawn line. Trim the excess fabric leaving a ¼" seam. Repeat this step with the remaining corners to make the quilt top.

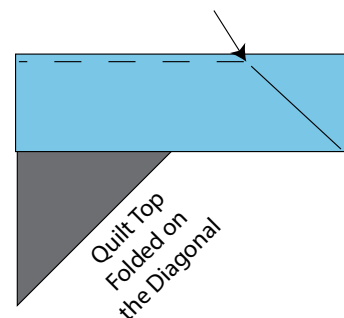
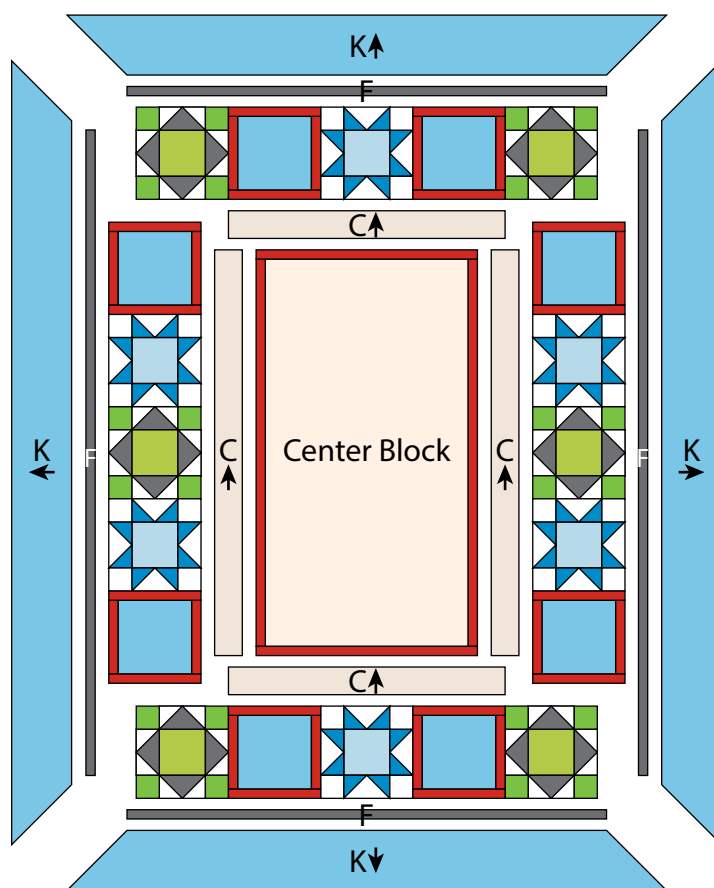


Fig. 12

18. Layer and quilt as desired.

19. Sew the (8) 2 ½" x WOF Fabric B strips together, end to end with 45-degree seams, to make the binding. Fold this long strip in half lengthwise with wrong sides together and press.

20. Bind as desired.



Quilt Layout

*Every effort has been made to ensure that all projects are error free. All the information is presented in good faith, however no warranty can be given nor results guaranteed as we have no control over the execution of instructions. Therefore, we assume no responsibility for the use of this information or damages that may occur as a result. When errors are brought to our attention, we make every effort to correct and post a revision as soon as possible. Please make sure to check [www.henryglassfabrics.net](http://www.henryglassfabrics.net) for pattern updates prior to starting the project. We also recommend that you test the project prior to cutting for kits. Finally, all free projects are intended to remain free to you and are not for resale.*